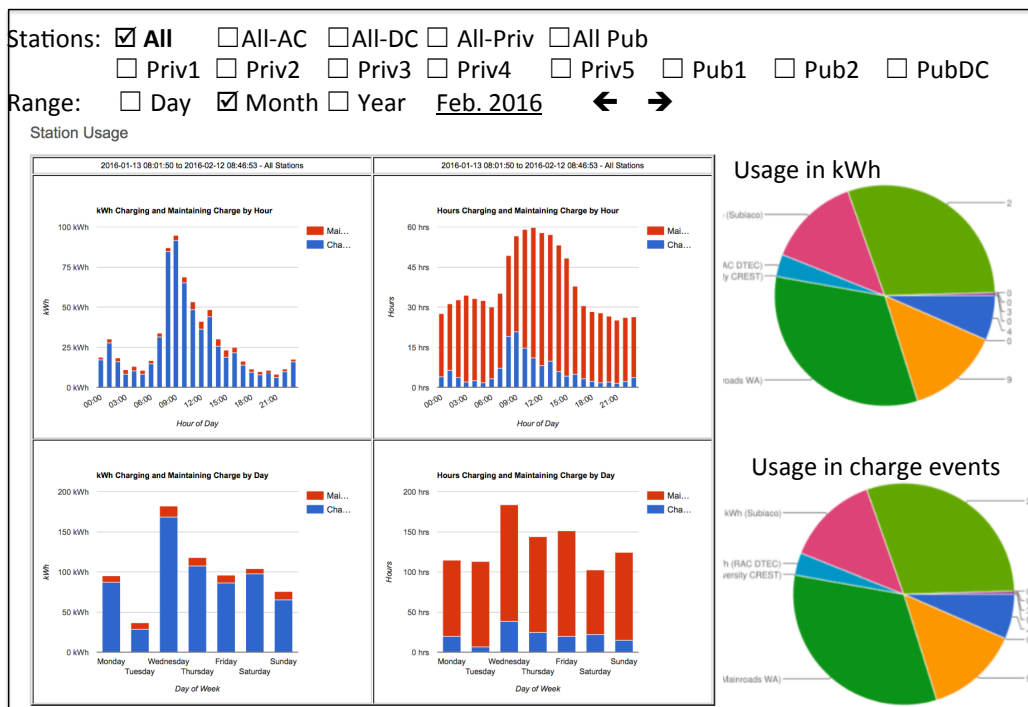


Project 2 – EV Charging Statistics

This web portal displays only the EV charging statistics for the 8 charging stations on site. There are 5 private stations (4 AC, 1 DC) and 4 public stations (4 AC, 1 DC)..

All incoming data is to be stored in a data-base and there are 6 diagrams with selectable data range per day, per month or per year.

- Select individual stations or all stations
- Select time span (default last month = 30 days)
- Charts (bar graphs unless otherwise noted):
 - a. Station usage [kW] over time of day distinguished for *charge* ($\geq 1\text{kW}$) and *maintain* ($<1\text{kW}$)
 - b. Station usage [charge duration in h] over time of day distinguished for *charge* ($\geq 1\text{kW}$) and *maintain* ($<1\text{kW}$)
 - c. Station usage in [kW] and [events] over day-of-week distinguished for AC and DC charging.
 - d. Charge events per day over selected time period (default 1 month)
 - e. Pie chart of charger usage in [kWh] over selected time period (find popular stations)
 - f. Pie chart of charger usage in [charge events] over selected time period (find high-usage stations)



Details Statistics

- Select all stations, groups of stations (all AC, all DC, all priv, all pub), or indiv. station
- In views (a)-(d) distinguish between charging (power $\geq 1\text{kW}$, blue color) and maintaining (power $<1\text{kW}$, red color)
- Data range same as for system overview, except default is month
- Pie chart display can be selected either as kWh or charge events
- Pie chart is displayed with station names next to slices together with actual values in [kWh] or [events]

- Color scheme:
Private stations yellow,
Public stations dark blue
DC station green